

WALKER  
CENTRE  
LIFTOUT  
PATTERN

# Mother of Pearl

A tiny bishop gown of pale pink voile. The neckline is smocked with pink flowerettes bordered with cream cables. Two rows of trellis stitch form soft radiating peaks.

The hem and sleeves are finished with machined scallops. Small bullion rosebuds and detached chain leaves decorate the hem and the back opening. Narrow ribbon, threaded through a casing, ties in a bow on each sleeve.

This pattern is suitable for use by *Wee Care* groups who wish to donate garments to hospitals for parents of premature or stillborn babies.

The centre liftout pattern also includes an optional angel sleeve version.

Note: this pattern will also fit dolls, but the neck size will need to be reduced.

## REQUIREMENTS FOR ALL SIZES

### Fabric

115 cm wide (45") voile or batiste  
Small 50cm (20")  
Medium 75cm (29 1/2")  
Large 1m (40")

### Notions

3 clear snap fasteners

### Sleeve trims (optional)

Lace edging 8mm wide (7/16")

Small 70cm (27 1/2")

Medium 75cm (29 1/2")

Large 80cm (31 1/2")

### Ribbon (to make casing)

7mm wide (5/16")

Small 50cm (20")

Medium 60cm (23 1/2")

Large 75cm (29 1/2")

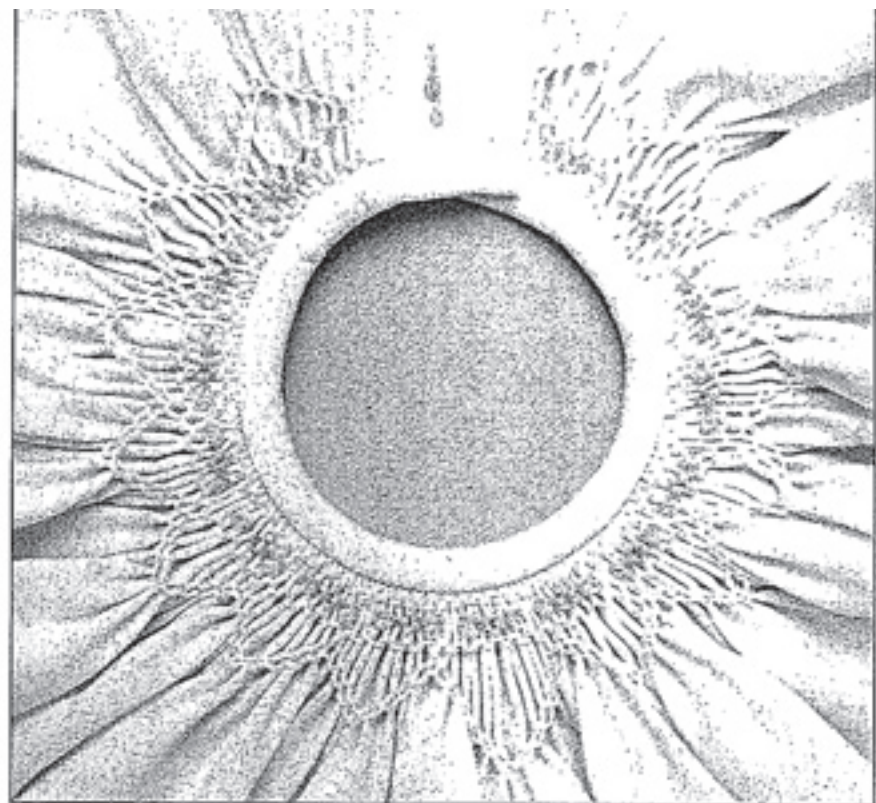
### Ribbon (to thread through casing)

7mm wide (5/16")

Small 85cm (33 1/2")

Medium 95cm (37 1/2")

Large 110cm (43 1/2")



## PLEATING

Prepare the bishop for pleating following the detailed instructions in the centre liftout. Pleat 7 half space rows (including 2 holding rows).

## SMOCKING

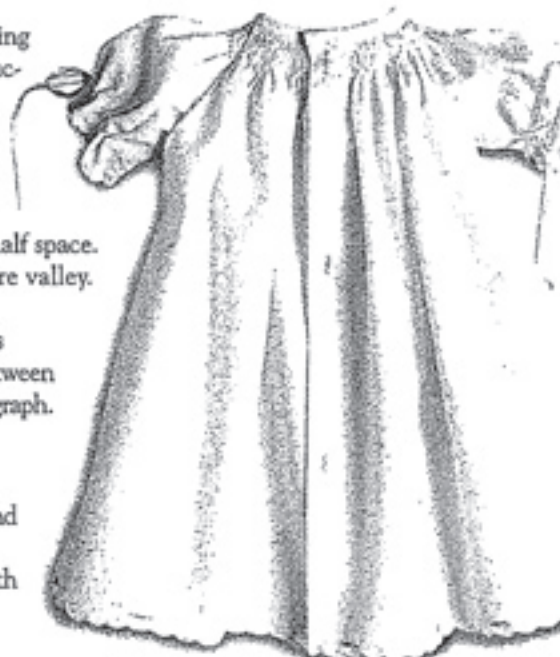
Note: all rows graphed are half space. Count pleats and mark centre valley.

### Accent stitches

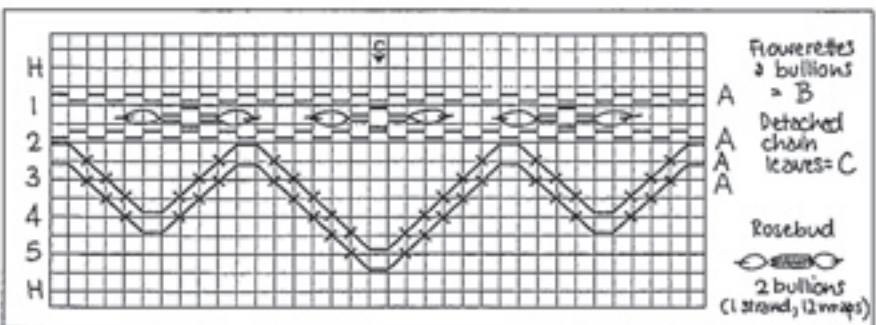
Work double cable flowerettes and detached chain leaves between rows 1 and 2 as indicated on graph.

## EMBROIDERY

Work 17 rosebuds around the machine scalloped hemline and 3 down the back band. Each rosebud is a double bullion with detached chain leaves.



COLOUR KEY  
DMC stranded cotton (2 strands)  
A = 746 off-white  
B = 3689 lt mauve  
C = 504 lt blue-green



ASQUE

## MOTHER-OF-PEARL & OYSTER

Multi-sized baby bishop; sizes S, M, L  
Suitable for *Woe Care* groups

For colour photos, see pages 30 & 37.

### REQUIREMENTS

Fabric: 110cm wide (45") voile or batiste  
 Size: 50cm (20")  
 Medium: 75cm (29½")  
 Large: 1m (40")  
 Notions  
 5 clear snap fasteners  
 Lace edging (short sleeve): 8mm wide (⅜")  
 Small: 70cm (27½")  
 Medium: 75cm (29½")  
 Large: 80cm (31½")  
 Lace edging (angel sleeve): 8mm wide (⅜")  
 Small: 55cm (19¾")  
 Medium: 75cm (29½")  
 Large: 80cm (31½")  
 Ribbon (sleeve casing): 7mm wide (¼")  
 Small: 50cm (20")  
 Medium: 80cm (25½")  
 Large: 75cm (29½")  
 Ribbon (thread through casing): 8mm wide (⅜")  
 Small: 90cm (33½")  
 Medium: 85cm (33½")  
 Large: 110cm (43½")

### PREPARATION FOR NECKLINE PLEATING

For detailed instructions on preparing, pleating and blocking a bishop, see *Bishop Neckline Guide* (sheet 2, side 1).

To pleat a bishop garment of the neckline, the front, back and sleeves are assembled together first.

For the snapped sleeve version, pleat the sleeves before joining to the front and back.

**Snapped sleeves (see *Oyster*)**

The sleeves are pleated before the lower sleeve edge is finished. Pleat 6 half space rows (including 2 holding rows), using long pleating threads. Flatten out pressing threads.

**Neckline**

**Long or short sleeved version:**

Using a narrow overlocked or zigzag, stitch the sleeves to the front and back (diag 1).

**Angel sleeve version:**

Finish the lower edge of the sleeve as required. Stitch the entire length of the sleeve to the back and front pieces. Trim the seam to 2-3mm (⅛") leaving 2mm (¾") unfinished at the lower sleeve edge (diag 2). Match the trimmed section of the seam.

### PLEATING

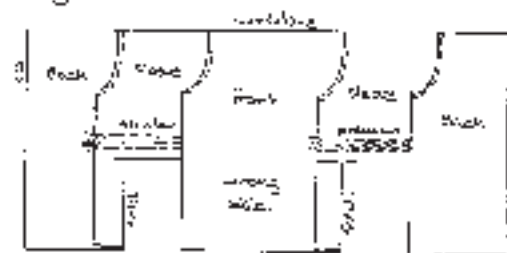
**Mother-of-pearl:** Pleat 7 half space rows (including 2 holding rows).

**Oyster:** Pleat 8 half space rows (including 2 holding rows).

### 'BLOCKING' THE NECKLINE (USING THE BISHOP COLLAR GLIDE)

Pull casing threads back to the position marked on the pattern to clear the placket area. Position the pleating over the bishop neckline guide. Flatten the pleats evenly, matching appropriate seam lines and markings. Tie off pleating threads, except the top holding row, which is used later to gather the neckline to fit the neck bias.

diag 1



diag 2



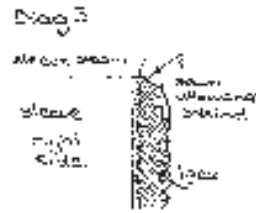
## FINISHING THE LOWER SLEEVE

### Attaching lace (see Oyster)

With wrong side of the lace against right side of fabric, pin the straight edge of the lace on the stitching line across the lower sleeve edge.

Insert a line of straight stitching down the heading in accordance with the lace while pinning (diag 3). Work machine pinning after finishing of lace.

(Refer to your sewing machine manual for the appropriate stitch settings).



## CONSTRUCTION

### 1. Side seams

With right sides together, stitch the entire side seams, from the hem edge to the sleeve edge (diag 4). Trim and neaten seam.

### 2. Back button bands

Press under the fabric at each onto back along the foldline to form the doubled back button bands. Baste in place at centre back neckline.

### 3. Neck binding

Remove all pressing threads except top holding row. Using this as a gathering thread, adjust neckline to fit bias strip. The pleats will be 'packed' tightly. Fold the bias strip in half lengthwise. Press and mark the centre of the strip. With right sides together, matching centres and stretching the bias strip slightly at the raw edge,

pin it around the neckline at approx. 2.5cm (1") intervals. The bias seam allowances will extend over the edges of the centre back (diag 5).



Paste the bias to the neckline, using the holding row as a guide to keep stitching straight. Ensure that the pleats are straight and evenly distributed. Adjust if necessary. Carefully stitch the bias around the neckline. Trim the seam to 4mm (1/8"). Tuck in the bias extensions at the centre back and fold the bias over to the wrong side. Slipstitch in place (diag 6).

### 4. Sleeve casing (Mother-of-pearl)

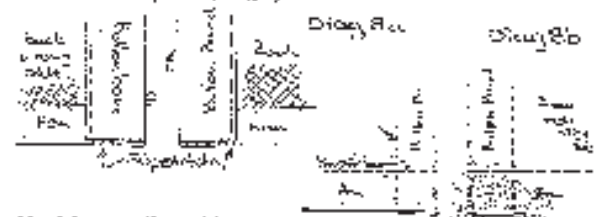
Work the 2 tiny buttonholes as marked on the sleeve. Following casing lines, pin the 7mm (5/8") ribbon over the lines on the wrong side of the sleeve. Fold under the raw edge of the ribbon at the underarm and stitch down both sides of the ribbon to form a narrow casing (diag 7). The two buttonholes are now in the centre of the casing.

## 5. Hem

### Machine-pin-stitched hem (Oyster)

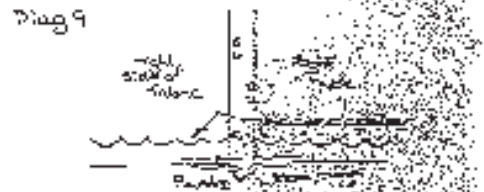
Unfold back button bands at the hem area. Turn up a double hem, pin and tack in place. Machine pin-stitch the entire hem (refer to your sewing machine manual for the appropriate stitch settings).

Re-fold the button bands on the left and right backs and machine pin-stitch. Alternatively, slipstitch the hem and back bands in place (diag 8).



### Machine-scalloped hem (see Mother-of-pearl)

Baste the folded button bands in place at the cuff (diag 9). Machine-stitch a scalloped row, following the marking line on the pattern as a guide. Where the casing bands end through the back of the stitching at the edge of button bands and trim excess threads. Where you do not cut the stitching, trim extra fabric from under stitching.



## 6. Finishing off

**Oyster.** Stitch the snap fasteners on the back button bands following the pattern for placement. Remove the shadow work marks (trace on the back surface of each back) and encircle following colour key on page 12. **Mother-of-pearl.** Work 2 rosebuds and bands on the right back button band approx. 10cm (4") apart (see photo on p. 31). Work rosebuds around the bias following the pattern for placement. Stitch snap fastener under each of the rosebuds on the button bands (diag 10). Cut the trim (2-7) at the raw edge thread through the casing on each sleeve. Tie to a bow.

### Angel sleeve version

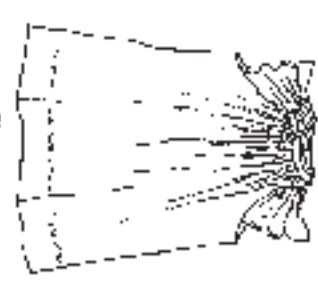
Cut a strip of narrow bias binding to fit the unbanded section of the lower armhole, allowing seam (1/2") to neaten the raw edge of the bias. The unbanded width is 2cm (3/8"), which allows a 1cm (3/8") seam allowance on the raw edges. Matching long raw edges, fold the bias in half lengthwise. Press. Fold under 5mm (1/4") at both ends of the bias strip. Align raw edges together, pin the binding around the unbanded section of the armhole (diag 11). Stitch in place. Pin the wrong side and slipstitch in place. Alternatively, work a narrow rolled and machine-stitched seam across the raw underarm edge to neaten (diag 12).



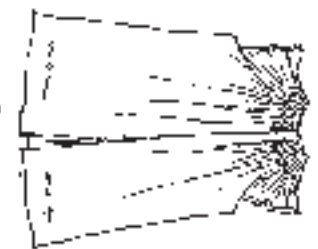
FRONT



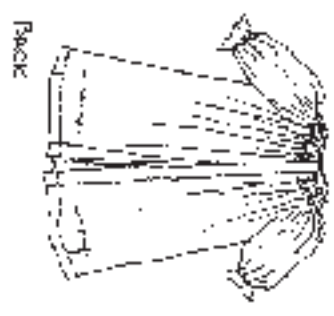
ANGEL SLEEVES



FRONT



BACK



BACK



Cut here for scalloped edge

2nd foldline (Dent)

SMALL

100 (2 1/2") seam allowance

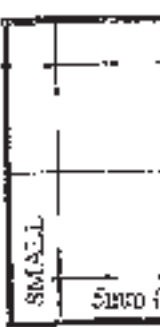
### MOTHER-OF-PEARL & OYSTER

SIZES: Small, Medium & Large  
ANGEL SLEEVE

CLT 2

4

1 cm (2/8") seam allowance



FRONT

SMALL

1cm (3/8") seam allowance

SMALL



# MOTHER-OF-PEARL & OYSTER

SIZES: Small, Medium & Large

FRONT

(CUT 1) on FAB

1

BACK

CUT 2

2

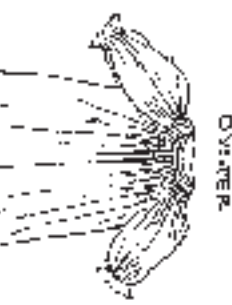
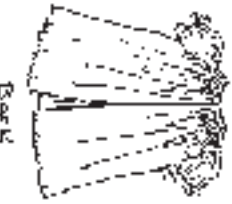
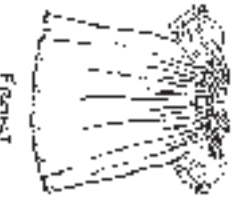
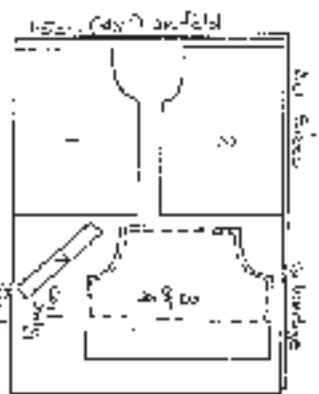
Pull back pleats ↓  
to this line ↑

### CUTTING OUT

Trace off pattern pieces onto tracing paper or vellum interfacing. Transfer pattern markings. Cut out following the layout. Long or short sleeve gowns cut 1, 2, 3 & 5. Single sleeve gowns cut 1, 2, 4 & 5.

### CUTTING LAYOUT

- Pattern pieces
- 1. FRONT
- 2. BACK
- 3. SLEEVE
- 4. ANGEL SLEEVE
- 5. NECK BIAS



OYSTER

FRONT: Place on fold

1cm (3/8") seam allowance

Seam (1/4") seam allowance

## MOTHER-OF-PEARL

SIZES: Small, Medium & Large

NECK BIAS

CUT 1

5

1/4" seam allowance



# MOTHER-OF-PEARL & OYSTER SLEEVE

SIZES: Small, Medium & Large

CUT 2 ON FOLD

3

1cm (3/8") seam allowance

SMALL

Cutting line: short sleeve

Scallop or attach narrow lace

1cm (3/8") seam allowance

1cm (3/8") seam allowance

Medium & Small long sleeve

